

### J16FC-CBU J16FD-CBU

**16K**

DN50~600



#### SPECIFICATION

CONCENTRIC TYPE · FLANGED TO JIS B2239 16K  
FACE-TO-FACE DIMENSION TO ISO 5752 / BS 5155 (DOUBLE FLANGE SHORT BODY)  
/ EN558-1 BASIC SERIES 13 (DOUBLE FLANGE SHORT BODY) / API 609  
LEVER / WORM GEAR OPERATOR

#### PRESSURE / TEMPERATURE RATINGS

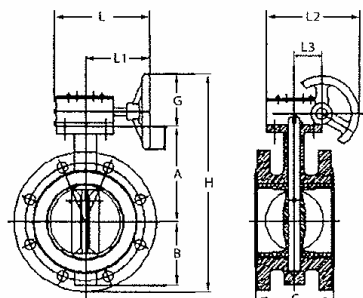
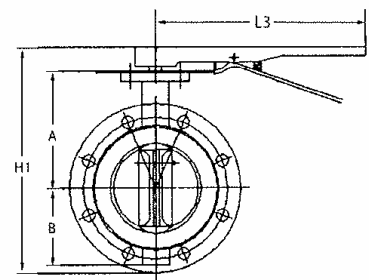
Working Pressure	1.6 Mpa
Testing Pressure	Shell : 2.4 Mpa Seat : 1.76 Mpa
Working Temperature	-20 °C to 110 °C (EPDM Seat) -10 °C to 80 °C (NBR Seat)
Suitable Media	Water, Oil & Gas

#### MATERIALS

Part	Material	JIS
Body	Cast Iron	FC 250
	Ductile Iron	FCD 400
Disc	Ductile Iron	FCD 400
	Aluminum Bronze	ALBC 2
	Stainless Steel 304	SCS 13
	Stainless Steel 316	SCS 14
Seat Ring	EPDM	
	NBR	
	Viton	
Shaft	Stainless Steel 410	SUS 410
	Stainless Steel 431	SUS 431
	Stainless Steel 316	SUS 316
Taper Pins	Stainless Steel 316	SUS 316
Key	Carbon Steel	
O-Ring	NBR	
Bushing	Luberized Bronze	

#### DIMENSIONS

Size mm	A mm	B mm	C mm	H mm	L mm	L1 mm	L2 mm	L3 mm	G mm	Cv 90°
50	110	80	108	303.5	226	173	45	267	150	135
65	134	80	112	337.5	226	173	45	267	150	220
80	131	95	114	342	226	173	45	267	150	302
100	150	114	127	371	226	173	45	267	150	600
125	170	114	140	406	226	173	45	267	150	1022
150	180	139	140	433.5	226	173	45	267	150	1579
200	210	175	152	573	313	239	63	358	302	3136
250	246	203	165	641	313	239	63	358	302	5340
300	276	242	178	695	307	226	80	358	302	8250
350	328	256	190	777	307	226	80	-	302	11917
400	376	296	216	957	103	174	104	103	279	16388
450	407	316	222	1007	103	174	104	103	279	21705
500	448	352	229	1085	103	174	104	103	305	27908
600	518	441	267	1246	138	174	130	138	305	43116



#### Note:

- Design and specifications are subject to change without prior notice.
- Other specifications and flange standards are available upon request.
- Actuator mounting flange conforms to ISO 5211 drilling.
- The butterfly valve can be supplied with electric or pneumatic actuator.